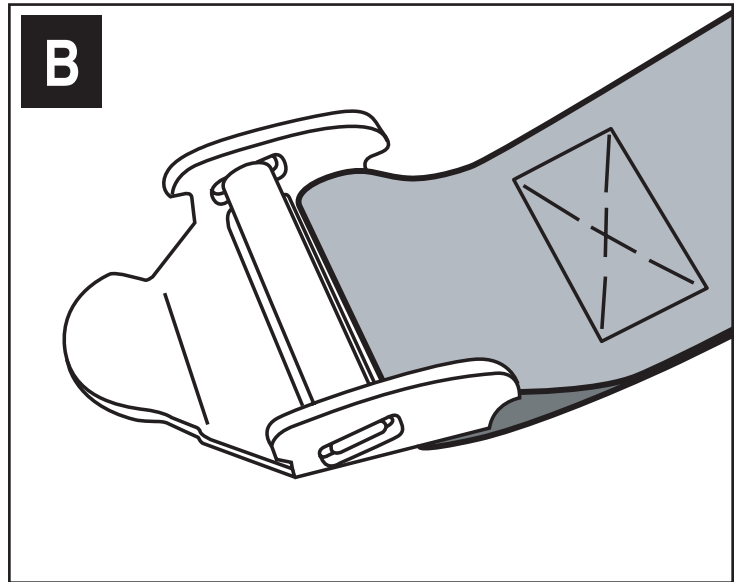
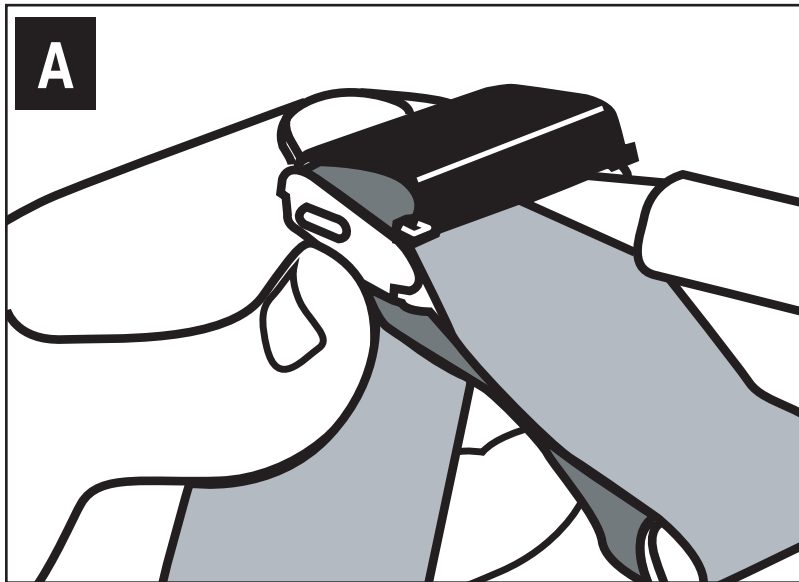
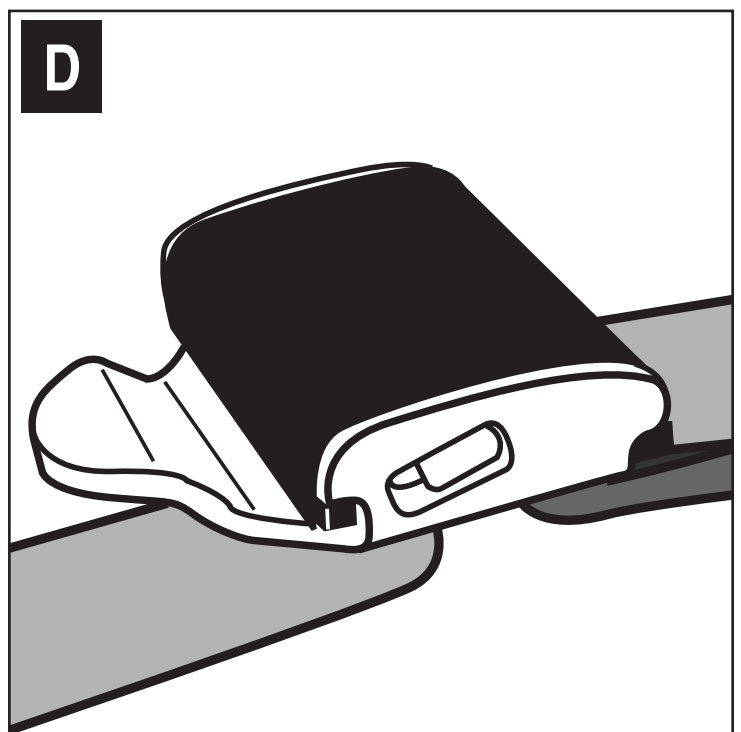
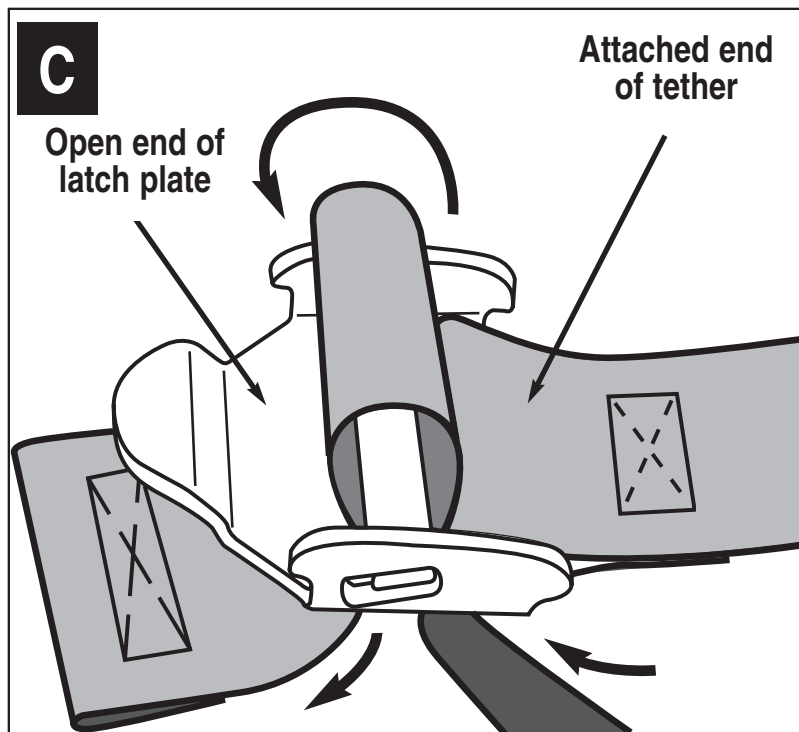


Correct Tether Lacing Instructions



1. Remove the plastic cover from the tether latch plate (Fig A) with a standard screw driver. Pull the free end of tether strap out of the adjuster (Fig B).



1. Thread free end of tether strap up between locking bar and the attached end of tether strap, around locking bar and down between locking bar and open end of latch plate as shown in Fig C. Make sure tether strap is not twisted. Snap plastic cover into place (Fig D). Repair is now complete. See the instruction manual to adjust the tether.